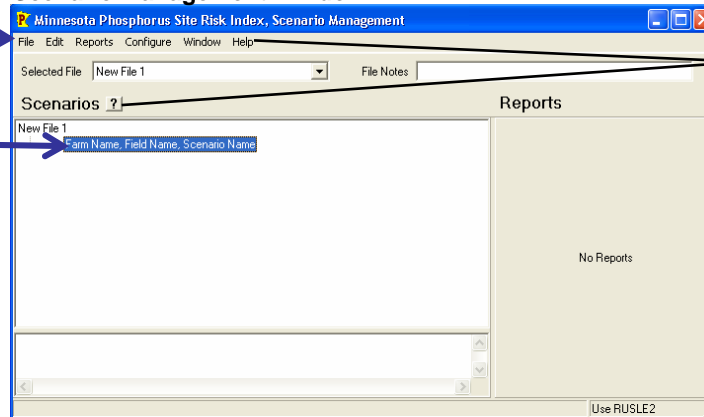


The Minnesota Phosphorus Index -- Quick Start Guide

http://www.mnpi.umn.edu

(1) Select File/New

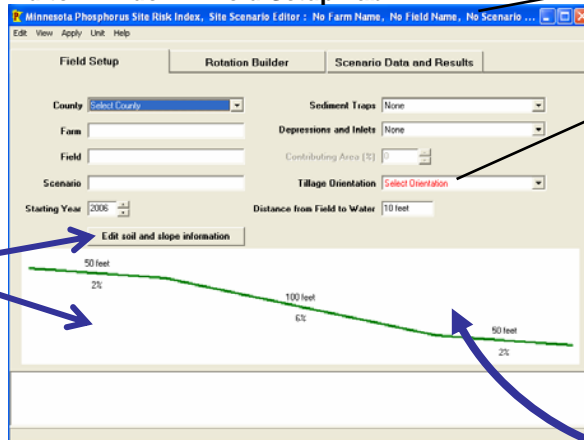
Scenario Management Window



(2) Double-click the new scenario to open the Editor Window.

Need help? Click on the ?, or press F1, or use the Help menu.

Editor Window – Field Setup Tab



(3) Fill in the information on the Field Setup page for a single field, or for a management unit within a field.

(4) Click on "Edit Soil and Slope" or on the graphic of the field's slope profile.

Here is the name of the field you are editing.

Red text means data must be entered to calculate a P Index.

If you don't know the soil series name, click on "Generic Soil List" and then "Select Soil" to get a list of soil textures.

Buffering class, hydrologic group, and % organic matter will be filled in automatically after you select a soil series.

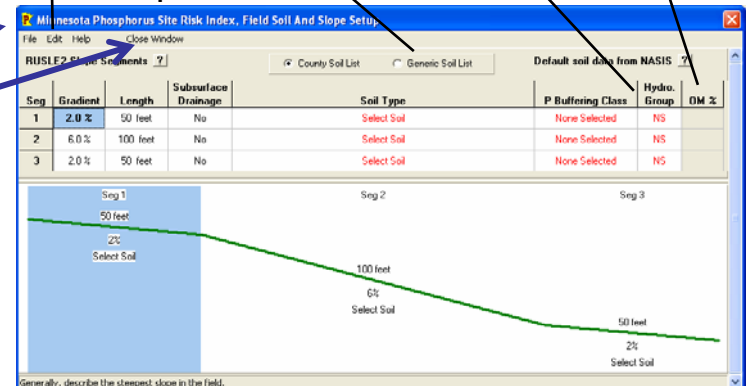
Gray cells cannot be edited. (Enter OM when you enter soil test info later.)

Use the Edit menu to add or delete slope segments.

(5) Identify a slope in the field that represents the area with the highest soil loss. Enter data about that slope in the Soil and Slope Window.

(6) Close the window to return to the Field Setup page.

Soil and Slope Window



Generally, describe the steepest slope in the field.

Editor Window – Rotation Builder Tab

(7) Click on the Rotation Builder tab, and then click on each cell to enter information about the cropping system.

Double-click on the manure or fertilizer cells to enter data about P applications.

Indicate the length of the rotation.

Manure Application Window

Only enter manure applied between 9-15 and 9-14 of the selected crop year.

Select tons or gallons of manure, or lbs P2O5 per acre.

If you entered tons or gallons of manure, you must indicate the P test for the manure. Click on the ? if you do not have a manure test and want to know typical values.

Editor Window – Yearly Data and Results Tab

(8) Indicate how many years to evaluate this field. Generally, the length of one rotation is enough. However, if manure applications are heavy, you may want to evaluate the site for 15 years or more. Inputs from the “Rotation Builder” page will be repeated as many times as needed for the length of the evaluation.

(9) Double-click to enter soil test P and soil organic matter data.

(10) Double-click on any Sediment Delivery cell to run RUSLE2 or to enter your own sediment delivery values.

(11) View results for each year and for an average of all years. The total P loss risk (the top number) is the sum of the three components.

(12) Click on Quit Editing in the Menu bar to return to the Scenario Management window.

(13) Use the file menu to save the file.

(14) Use the Edit menu to insert new fields or alternative management systems for a field. Use the Reports menu to design printouts of results from one scenario, or to compare results from multiple scenarios.

If you change data on the “Yearly Data and Results” tab, a yellow background will appear, indicating that you have overridden the data on the “Rotation Builder” page. Use the Edit menu to remove overrides.

Red text indicates sediment delivery needs to be calculated before you will get a correct P Index calculation. See step 10.

Click the ? for more information about interpreting results.

Scenario Management Window